



**TACO**

MASTER BOOK

MAKE THAT CHANGE

WWW.TACO.CO.ID

✉ info@taco.co.id

📷 taco.id

📘 taco.id

SCAN THIS QR  
FOR TACO EXPERIENCE



# TACO

*Halo* TACO

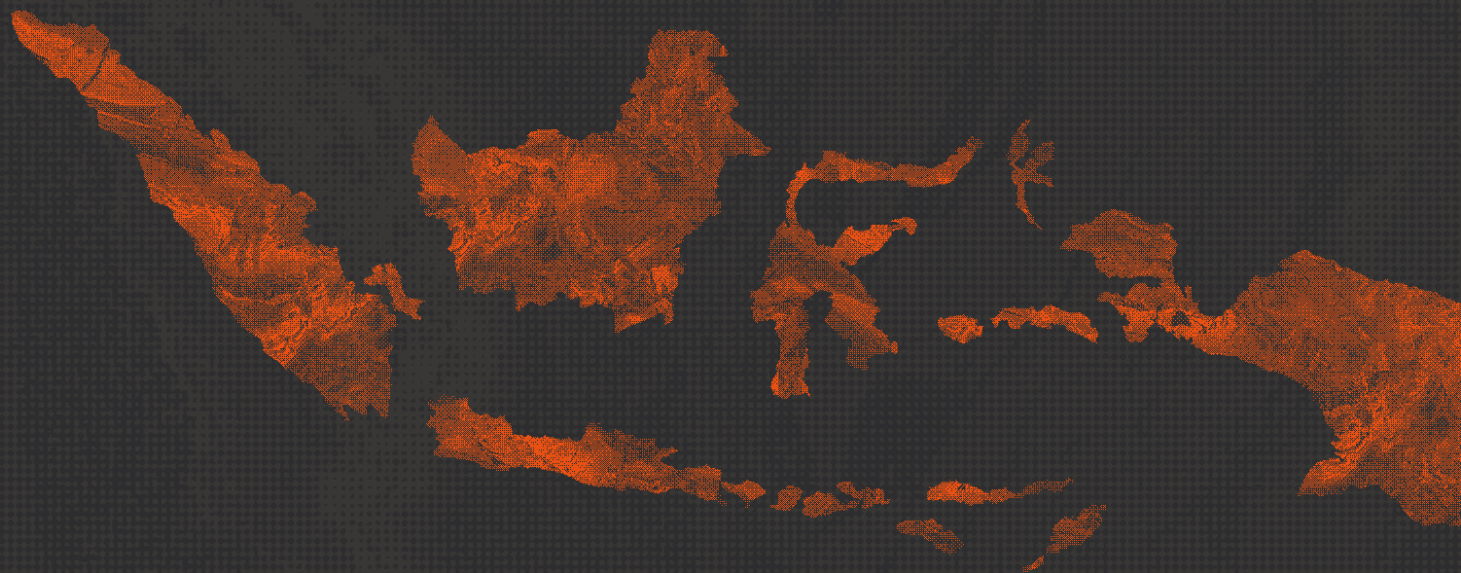
☎ 021-3971-8600  
📞 0811-905-6868



Citra Towers, North Tower, 23<sup>rd</sup> & 25<sup>th</sup> Floor,  
Jl. Benyamin Sueb Kav. A6, Kemayoran, Jakarta 10630

Your journey  
starts here.  
Make that  
change.

# TACO



INTERNATIONAL STANDARD & SNI CERTIFIED

VAST RANGE OF PRODUCT SELECTIONS

STRONG DISTRIBUTION NETWORK

HIGH STOCK AVAILABILITY

LARGEST NATIONWIDE COVERAGE

VERTICALLY-INTEGRATED  
MANUFACTURING PLANT IN INDONESIA

FURNITURE FITTING

KITCHEN RACK

FURNITURE ACCESSORIES

LUXURY VINYL FLOORING - LVF 2mm

LUXURY VINYL FLOORING - LVF 3mm

STONE POLYMER COMPOSITE FLOORING - SPC 4mm

LUXURY VINYL FLOORING - LVF 5mm

TACO HPL

SPECIAL Collection

Tacompact Board

Postforming HPL

Lab Grade HPL

Clean Touch HPL

Tacore HPL

ULTIMATE

WOODGRAIN

PATTERN

SOLID

TACO PVC EDGING

TACO PVC SHEET

HARDWARE

FLOORING

LAMINATES





# TACO

## HARDWARE

- P 04-06 FURNITURE FITTING
- P 08 KITCHEN RACK
- P 10 FURNITURE ACCESSORIES



# FURNITURE FITTING

To get more detailed information on our hardware collections, please request our hardware catalogue to:

*Halo* **TACO**

☎ 021-3971-8600

☎ 0811-905-6868



[WWW.TACO.CO.ID](http://WWW.TACO.CO.ID)

✉ [info@taco.co.id](mailto:info@taco.co.id)

📷 [taco.id](https://www.instagram.com/taco.id)

📘 [taco.id](https://www.facebook.com/taco.id)

## FURNITURE FITTING

### ET-01

#### SOFT CLOSING HINGE

Zinc Alloy (Chrome)



Opening angle **100°**  
 Depth of hinge cup **11.5mm**  
 Diameter of hinge cup **35mm**  
 Panel size **3-7mm**  
 Door thickness range **14-24mm**

#### AVAILABLE IN:

Full Overlay, Half Overlay, Inset

### ET-02

#### SOFT CLOSING HINGE

Stainless Steel



Opening angle **100°**  
 Depth of hinge cup **11.5mm**  
 Diameter of hinge cup **35mm**  
 Panel size **3-7mm**  
 Door thickness range **14-24mm**

#### AVAILABLE IN:

Full Overlay, Half Overlay, Inset

### ET-03

#### ALUMINIUM DOOR SOFT CLOSING HINGE

Zinc Alloy (Chrome)



Opening angle **100°**  
 Diameter of hinge cup **28mm**  
 Door thickness range **19-24mm**

#### AVAILABLE IN:

Full Overlay, Half Overlay, Inset

### ET-04

#### GLASS DOOR SOFT CLOSING HINGE

Zinc Alloy (Chrome)



Opening angle **95°**  
 Diameter of hinge cup **26mm**  
 Panel size **3-5mm**  
 Door thickness range **4-6mm**

#### AVAILABLE IN:

Full Overlay, Half Overlay, Inset

### ET-05

#### MINI SOFT CLOSING HINGE

Zinc Alloy (Chrome)



Opening angle **95°**  
 Depth of hinge cup **10.1mm**  
 Diameter of hinge cup **26mm**  
 Panel size **3-5mm**  
 Door thickness range **12-22mm**

#### AVAILABLE IN:

Full Overlay, Half Overlay, Inset

### ET-06

#### HINGE

Zinc Alloy (Chrome)



Opening angle **100°**  
 Depth of hinge cup **11.9mm**  
 Diameter of hinge cup **35mm**  
 Panel size **3-5mm**  
 Door thickness range **14-22mm**

#### AVAILABLE IN:

Full Overlay, Half Overlay, Inset

## FURNITURE FITTING

### RLT 001 FE

Material **Steel**  
 Product length **300-500mm (12"-20")**  
 Bearing weight **20 kg / 450mm (18")**  
 Color **Epoxy Coated**  
 Thickness **1.0mm**

#### WHITE SIDE MOUNT DRAWER SLIDE



### US 001 SC

Slide width **48mm**  
 Product length **250-500mm (10"-20")**  
 Bearing weight **34 kg / 450mm (18")**  
 Life span **50.000 times**  
 Thickness **1.8 / 1.5 / 1.0mm**

#### SOFT CLOSING UNDERMOUNT SLIDE FULL EXTENSION WITH CLIP-ON

Max drawer slide thickness: 16mm / 19mm, with locking brackets



Full extension, quiet operation, drawer height adjustment could be 0-3mm

### BBS 005 SC

Slide width **37mm**  
 Product length **300-550mm (12"-22")**  
 Bearing weight **25 kg / 450mm (18")**  
 Life span **50.000 times**  
 Color **Orange black**  
 Thickness **1.2 / 1.2 / 1.2mm**

#### SOFT CLOSING BALL BEARING SLIDE FULL EXTENSION 37



### BBS 006 FE

Slide width **45mm**  
 Product length **250-550mm (10"-22")**  
 Bearing weight **35 kg / 450mm (18")**  
 Life span **50.000 times**  
 Color **Black**  
 Thickness **1.2 / 1.0 / 1.0mm**

#### BALL BEARING SLIDE FULL EXTENSION 45



## FURNITURE FITTING

### BBS 007 FE

BALL BEARING SLIDE  
FULL EXTENSION 36

Slide width **36mm**  
Product length **250-550mm (10"-22")**  
Bearing weight **20 kg / 450mm (18")**  
Life span **50.000 times**  
Color **Black**  
Thickness **1.0 / 1.0 / 1.0mm**



### BBS 008 SC

HEAVY DUTY SOFT CLOSING BALL BEARING SLIDE  
FULL EXTENSION 45

Slide width **45mm**  
Product length **300-550mm (12"-22")**  
Bearing weight **40 kg / 450mm (18")**  
Life span **50.000 times**  
Color **Orange black**  
Thickness **1.0 / 1.0 / 1.2mm**



### BBS 009 PO

PUSH OPEN BALL BEARING SLIDE  
FULL EXTENSION 45

Slide width **45mm**  
Product length **300-550mm (12"-22")**  
Bearing weight **40 kg / 450mm (18")**  
Life span **50.000 times**  
Color **Orange black**  
Thickness **1.2 / 1.2 / 1.4mm**



## KITCHEN RACK

### HW-006I / SS

Zinc Alloy (Chrome) / Stainless Steel



Dimension  
**D 467 X W 287 X H 485mm**  
Cabinet Width - Inside Width  
**350-314mm**

### HW-009I

Zinc Alloy (Chrome)



Dimension  
**D 370 X W 660 X H (600-900)mm**  
Cabinet Width - Inside Width  
**750-700mm**

### HW-010SS

Stainless Steel



Dimension  
**L 280 X W (565-965) X H 65mm**  
Cabinet Width - Inside Width  
**(600-1000) - (565-965)mm**

### HW-018I

Zinc Alloy (Chrome)



Dimension  
**D 500 X W 860 X H (1850-2200)mm**  
Cabinet Width  
**900mm**

### HW-023I / SS

Zinc Alloy (Chrome) / Stainless Steel



Dimension  
**L 460 X W 288 X H 490mm**  
Cabinet Width - Inside Width  
**350-305mm**  
[Tray Included]

### HW-025I

Zinc Alloy (Chrome)



Dimension  
**D 295 X W (864-868) X H 560mm**  
Cabinet Width  
**900mm**

### HW-015SS

Stainless Steel



Dimension  
**D 270 X W 325 X H 325mm (8L)**  
Cabinet Width - Inside Width  
**350-315mm**



## FURNITURE ACCESSORIES

### TL-103 CAM LOCK

Zinc Alloy



Cylinder Length **25-30mm**  
Cylinder Diameter **23mm**

### TL-105 PUSH LOCK

Zinc Alloy



Cylinder Length **19mm**  
Cylinder Diameter **20mm**

### TL-138 SQUARE DRAWER LOCK

SPCC Steel



Cylinder Length **22-32mm**  
Cylinder Diameter **20mm**

### TL-202 ROLLER SHUTTER DRAWER LOCK

SPCC Steel



Cylinder Length **22mm**  
Cylinder Diameter **20mm**

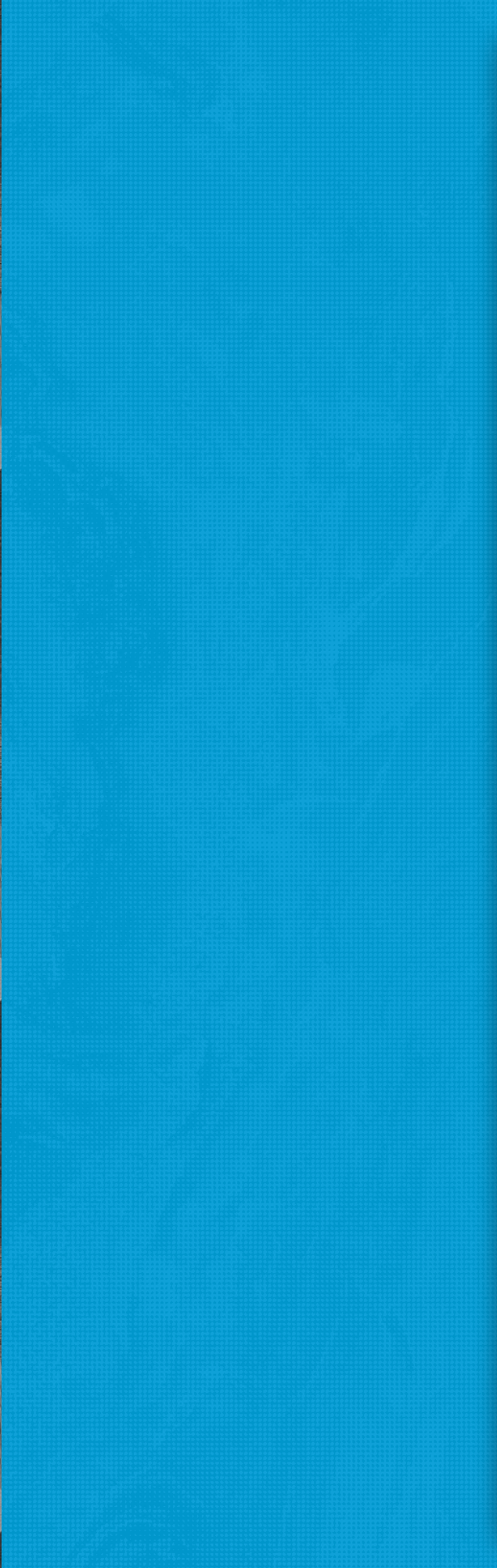
### TGS-100N GAS SPRING

Steel + Plastic



Finishing **Zinc Alloy**  
Extension Force F1 **100 N**





# TACO

# FLOORING

- P 03 LVF 2mm
- P 04-05 LVF 3mm
- P 06 SPC 4mm CLICK
- P 07 LVF 5mm CLICK



## WOOD SERIES

Wear Layer **0.15mm** | Thickness **2.0mm**  
 Size **152.4mm x 914.4mm** | 27 pieces / box (**3.76sqm**)

**2**mm  
**LVF**



TV-201 Light Oak



TV-205 Silver Oak



TV-202 Honey Oak



TV-206 Antique Oak



TV-203 Brazilian Tigerwood



TV-207 Barn Oak



TV-204 Dark Applewood



TV-208 Grey Pine

PRODUCED UNDER HIGH QUALITY SUPERVISION WITH ISO 9001 ISO 14001 OHSAS 18001 CE STDS.



100%  
Waterproof



Easy to Clean  
& Maintain



Termite  
Proof



Simple & Quick  
to Install

For more information on our flooring collections with plank samples, please request our flooring catalogues to:

**Halo TACO**

☎ 021-3971-8600

☎ 0811-905-6868



WWW.TACO.CO.ID

✉ info@taco.co.id

📷 taco.id

📱 taco.id

## WOOD SERIES

Wear Layer 0.2mm | Thickness 3.0mm  
Size 152.4mm x 914.4mm | 24 pieces / box (3.34sqm)

# 3mm LVF



TV-010 Warm Cherry



TV-013 White Oak



TV-006 Real Cherry



TV-003 Washed Oak



TV-014 Natural Beech



TV-016 Grey Oak



TV-008 Sand Malmo



TV-005 Vintage Oak



TV-009 Rich Walnut



TV-001 Rustic Oak

## WOOD SERIES

Wear Layer 0.2mm | Thickness 3.0mm  
Size 152.4mm x 914.4mm | 24 pieces / box (3.34sqm)

# 3mm LVF



TV-019 Victorian Barn



TV-017 Original Cherry



TV-015 Vicenza Elm



TV-007 Merbau Wood



TV-004 Parma Oak

## STONE SERIES

Wear Layer 0.2mm | Thickness 3.0mm  
Size 304.8mm x 609.6mm | 18 pieces / box (3.34sqm)



TV-024 Grey Slate



TV-026 Stone



TV-025 Dark Grey Slate

## WOOD SERIES

Wear Layer **0.3mm** | Thickness **4.0mm**  
Size **172mm x 1210mm** | 11 pieces / box **(2.29sqm)**

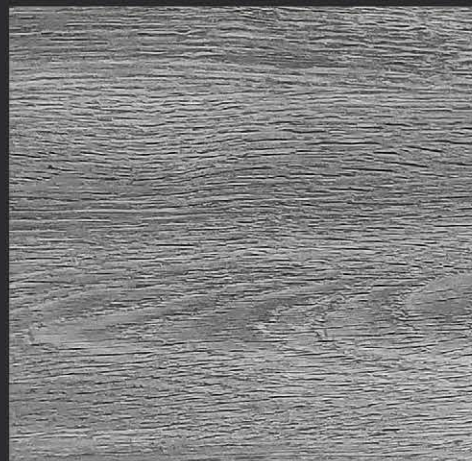
**4** mm  
**SPC**  
CLICK



**TV-401** Tuscany Oak



**TV-404** Golden Acacia



**TV-402** Ottawa Oak



**TV-405** Carson Oak



**TV-403** Valencia Oak



**TV-406** Glenmore Oak

## WOOD SERIES

Wear Layer **0.5mm** | Thickness **5.0mm**  
Size **220mm x 1210mm** | 8 pieces / box **(2.13sqm)**

**5** mm  
**LVF**  
CLICK



**TV-501** Sandbar



**TV-504** Newport



**TV-502** Hampton



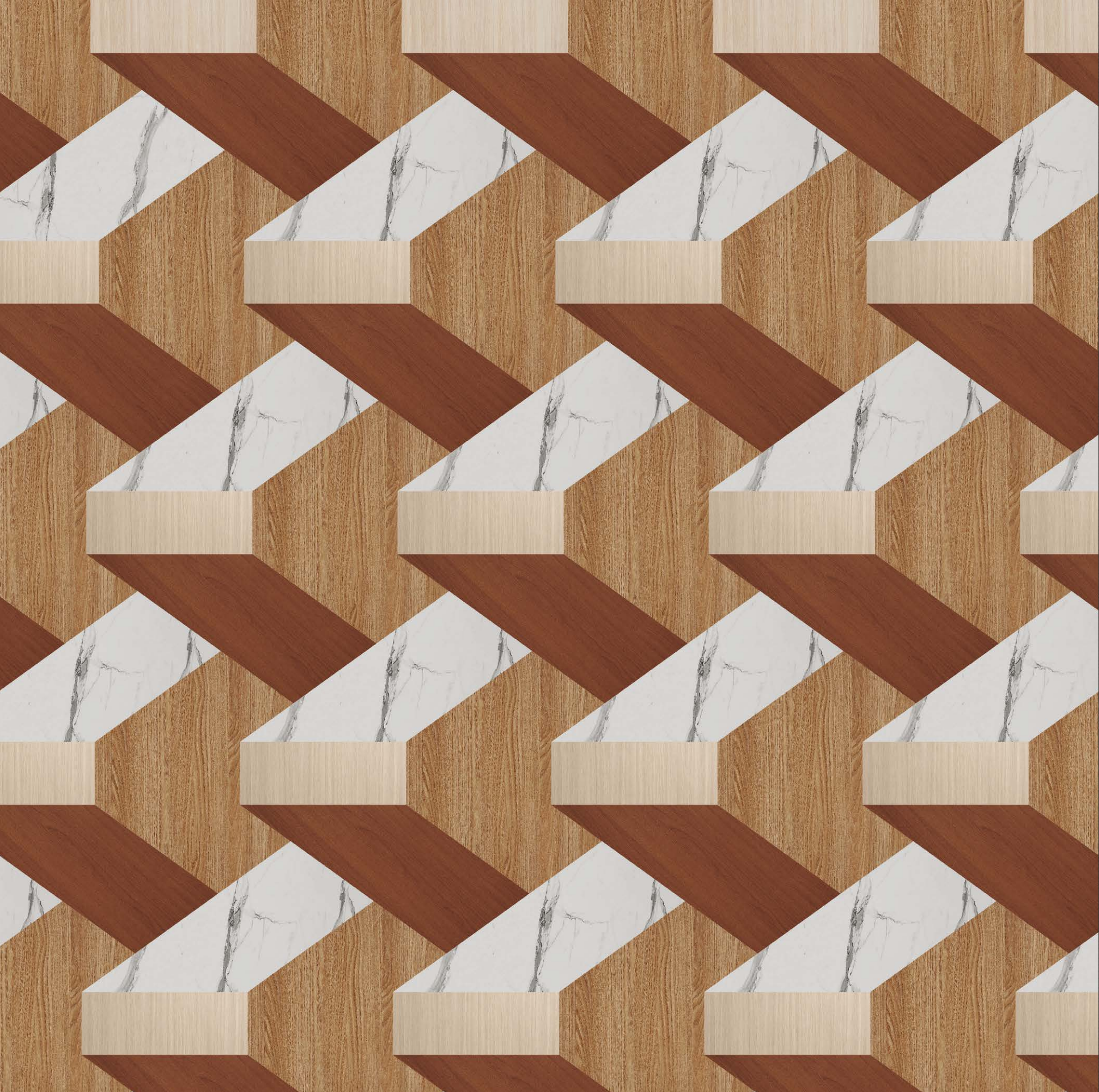
**TV-505** Malibu



**TV-503** Marion



**TV-506** Windsor



**TACO**

LAMINATES HPL

## TECHNICAL DATA

PROPERTY	UNIT	SNI ISO 4586-2: 2017	TACO HPL CONFORMS
Thickness	mm	± 0.10	✓
Dimension	mm	± 10/0	✓
Resistance to dry heat 180°C	Appearance	Slight Effect	✓
Resistance surface wear	Revs/Cycle	350	✓
Resistance to immersion in boiling water			
a. Gloss finish	Rating (min)	3	✓
b. Other finishes	Rating (min)	4	✓
Resistance to water vapour	Rating (min)	3	✓
Dimensional stability at elevated temperature			
a. Longitudinal dimensional change	%	Max 0.75	✓
b. Transversal dimensional change	%	Max 1.25	✓
Dimensional stability at ambient temperature			
a. Longitudinal dimensional change	%	Max 0.75	✓
b. Transversal dimensional change	%	Max 1.25	✓
Dimensional stability at 20°C			
a. Longitudinal	%	Max 0.43	✓
b. Transverse	%	Max 0.71	✓
Resistance to impact by small diameter ball	N	Min 15	✓
Resistance to cracking	Rating (min)	4	✓
Resistance to scratching	Rating (min)	2	✓
Resistance to staining	Appearance	Refer to technical data sheet	✓
Light fastness (xenon arc)			
a. Grey scale	Rating (min)	4d	✓
b. Color change	Rating (min)	4d	✓

- TACO HPL are 1220mm x 2440mm x 0.7mm unless otherwise stated.
- TACO HPL are recommended for interior use only.
- All specifications are subject to change without prior notice.
- The samples shown are only indicative of the color shade and textures.
- Customers are advised to reconfirm the color at the time of ordering.
- Please inspect all products purchased before installation.



PSB Singapore



Komite Akreditasi Nasional



NOHON SERTIFIKAT: 0011SSM.01.102019  
ISO 9001:2015



LEMBAGA SERTIFIKASI SISTEM MANAJEMEN  
LSBM-000-IDN



### DISCLAIMER

TACO only covers faults in the laminate product itself, and not after it has been processed into secondary product. Color may differ slightly from samples due to different production lots and this should be considered normal.





P 12-13 TACOMPACT BOARD  
POSTFORMING HPL  
LAB GRADE HPL  
P 14-15 CLEAN TOUCH HPL  
TACORE HPL

# SPECIAL COLLECTION



# Special Collection

## TACOMPACT BOARD



Extremely rigid, durable, highly moisture-resistant and impact-resistant, our TACOMPACT Boards are available in the standard 1220mm x 2440mm size with 12mm thickness (other thicknesses available by request). TACOMPACT Boards are suitable for heavy-duty areas of application such as toilet cubicles, partitions, protective wall claddings, wet rooms and high impact countertops.



Moisture & Impact Resistant



SCAN FOR MORE INFORMATION

## POSTFORMING HPL



Bending Radius of 7mm

Our postforming grade laminate is crafted with high resin technology that presents a very slim yet elegant profile that leaves no room for any pointy sides due to its super flexible characteristics. Bendable up to a very small 7mm radius, our postforming grade laminate allows continuous curve to avoid the need for covering edges! Get creative when designing furniture with our postforming HPL.



SCAN FOR MORE INFORMATION

## LAB GRADE HPL



Anti Bacterial



Chemical Resistant

Even though all HPL is inherently hygienic due to its density and ease of clean, our antibacterial lab grade laminate provides extra protection as it is produced with a special nanosilver ion technology from Germany that is proven to inhibit bacterial growth and reduce the quantity of bacteria by 99% in 24 hours. Also chemical resistant, this characteristic makes it perfect for use in hospitals, labs, schools, gyms and restaurants.



SCAN FOR MORE INFORMATION

## AVAILABLE BY REQUEST

For more information, please contact your TACO Project Sales Associate.  
Email to: [project@taco.co.id](mailto:project@taco.co.id)

# Special Collection

## CLEAN TOUCH HPL



The new generation of solid colors with micro contour surface technology from Germany that is soft to the touch, highly non-reflective, strongly resists fingerprints and possesses amazing self-healing capabilities to minor scrapes and scratches for long-lasting effect.



SCAN FOR MORE INFORMATION



Self Healing



Anti Reflective



Anti Fingerprint



Easy to Clean



**Q-9003-AF**  
Black



**Q-9000-AF**  
Noble Grey



**Q-9001-AF**  
Fantasy Metal



**Q-9002-AF**  
Deep Night



## TACORE HPL



TACORE



BASIC PRODUCT

TACORE HPL with its homogeneous solid white color throughout, provides a seamless and optically pleasing laminate option to enhance innovative and stylish interior design.



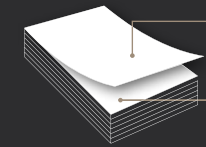
SCAN FOR MORE INFORMATION



Seamless Design

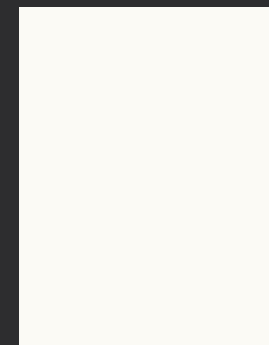


Optically Pleasing

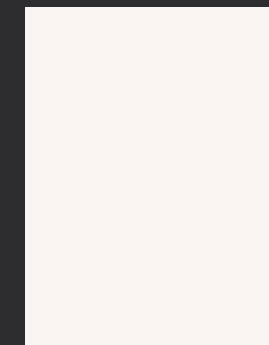


White paper coated with Melamine Resin

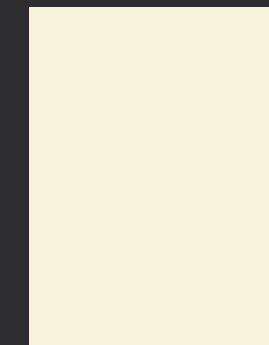
Layers of white paper coated with Phenolic Resin



**TH 701 CR**  
Absolute White



**TH 702 CR**  
Pure White



**TH 703 CR**  
Canvas White



**TH 701 CRG**  
Absolute White Glossy

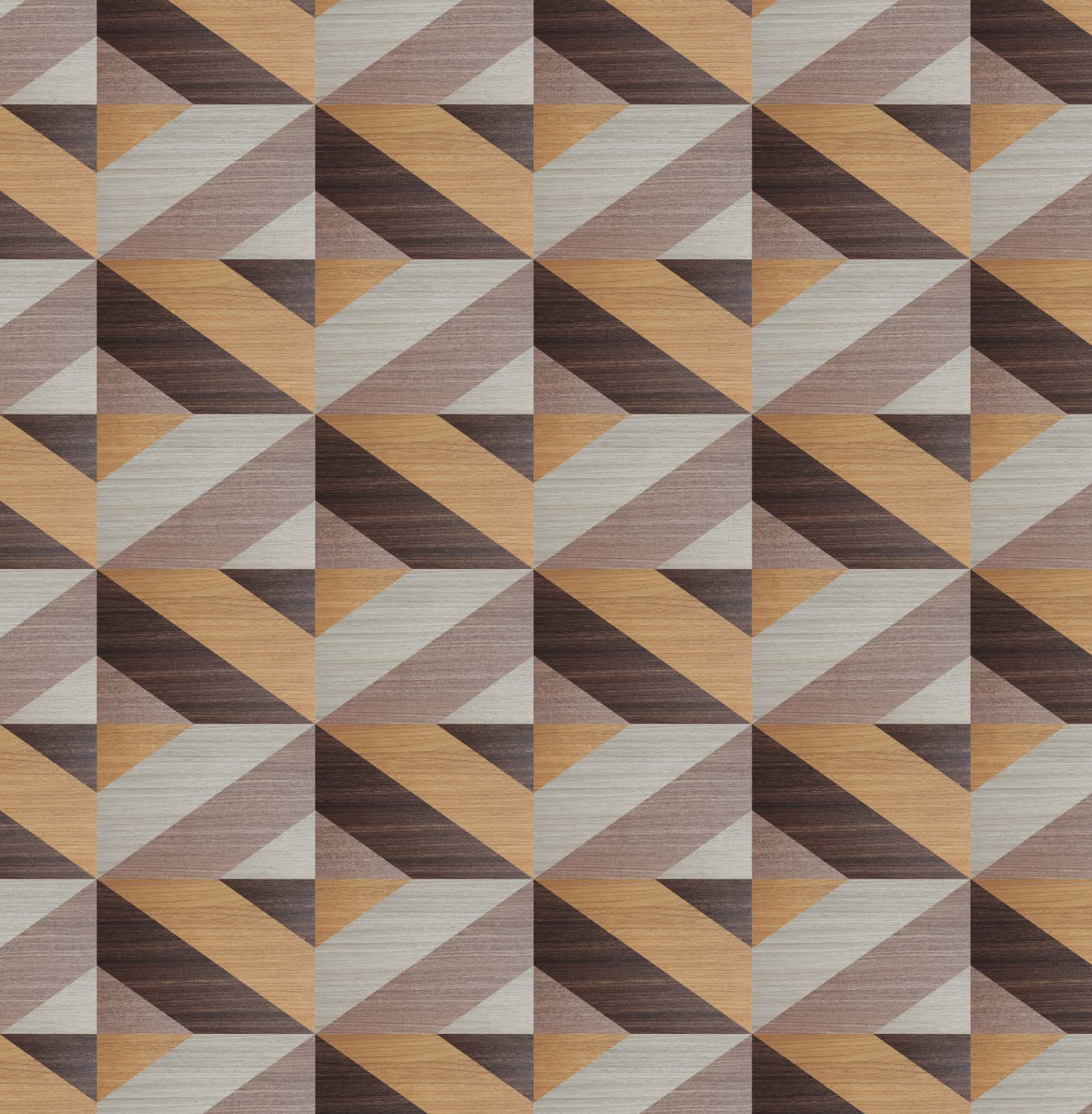


**TH 702 CRG**  
Pure White Glossy



**TH 703 CRG**  
Canvas White Glossy





# WOODGRAIN FINE-TEXTURED

**E** Edging Available / **H** Horizontal Woodgrain /  Wood Knots



Available in 12 patterns.



TH 5006 NT  
Scandinavian Larch



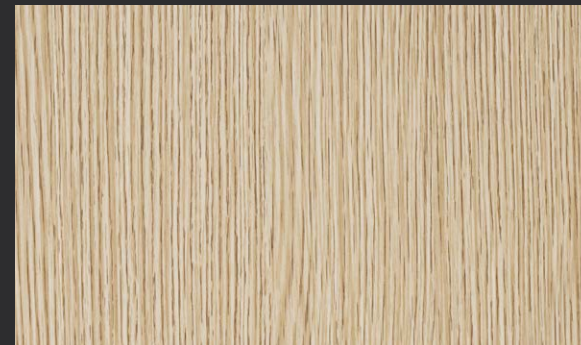
TH 5008 NT  
Vintage Elm



TH 5012 NT  
Normand Ash



TH 5003 NT  
Titan Oak



TH 5002 NT  
Wellington Oak



TH 5007 NT  
Court Ash



TH 5010 NT  
Grandiose Oak



TH 5004 NT  
Tawny Afromosia



TH 5009 NT  
Hazel Rhumba



TH 5011 NT  
Brazilian Walnut



TH 5001 NT  
Cinnamon Teak



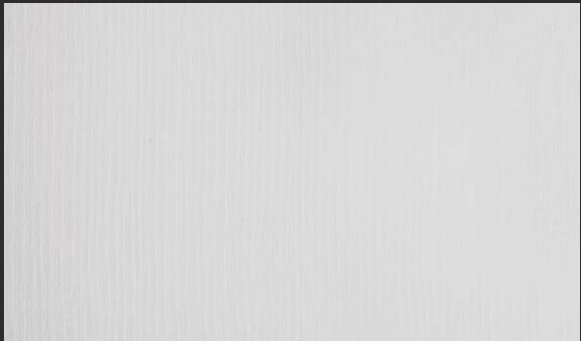
TH 5005 NT  
Texas Elm





- P 22-24 ULTIMATE WOODGRAIN
- P 25 ULTIMATE WOODGRAIN GLOSS
- P 26-27 ULTIMATE PATTERN

# ULTIMATE



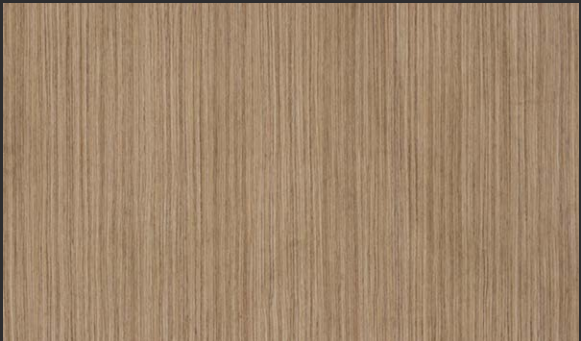
X-0089-TR  
White Trave



X-0052-CM  
Tokyo Ash



X-0050-CM  
Acacia Teak



X-0056-CM  
Michigan Oak



X-0120-DM  
Alin Eucalyptus



X-0098-DM  
Champagne Pearlwood



X-0044-CM  
American Teak



X-0109-DM  
London Kurumi



X-0108-DM  
Oslo Kurumi



X-0095-DM  
Japanese Elm



X-0081-DM  
Brazilian Teak



X-0047-CM  
Manchester Walnut



X-0046-CM  
European Pear



X-0049-CM  
Straight Rhumba



X-0051-CM  
Kenya Walnut



X-0048-CM  
American Walnut





X-0092-DM  
Acacia Wood



X-0091-DM  
Mahogany Wood



X-0045-CM  
Canadian Teak

E



X-0096-DM  
Celtic Elm



X-0082-DM  
Indian Walnut

W



X-0100-DM  
Verano Walnut

W



X-0111-DM  
Bryna Ektra



X-0099-DM  
Prima Walnut



X-0110-DM  
Gratt Ektra



X-0090-TR  
Black Trave



X-0008-G  
Smoke Alavi

E



X-0011-G  
Ubuntu Alavi

E



X-0009-G  
Bronze Alavi



X-0012-G  
Sulawesi Ebony



X-0014-G  
Malaysian Ebony

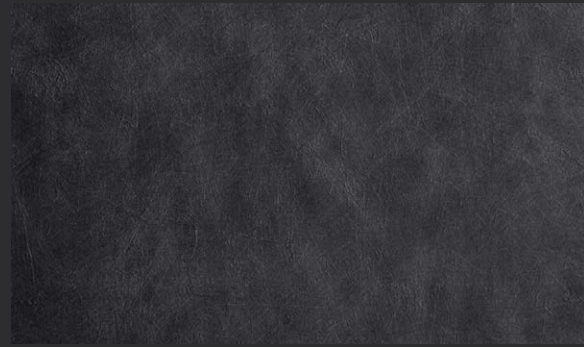


X-0083-G  
Makassar Ebony





X-0060-DM  
Fanale Adresia



X-0070-ST  
Grafito Slate



X-0062-DM  
Grigio Marmo



X-0063-DM  
Bruno Marmo



X-0020-SU  
Royal Calacatta



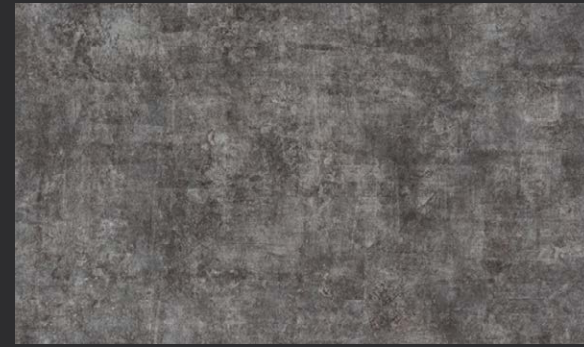
X-0020-G  
Royal Calacatta Gloss



X-0069-ST  
Oro Slate



X-0064-G  
Gris Reyra



X-0072-DM  
Argento Sfondo



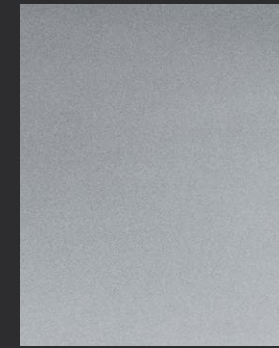
X-0018-SU  
Cassa Erba



X-0019-SU  
Cassa Forma



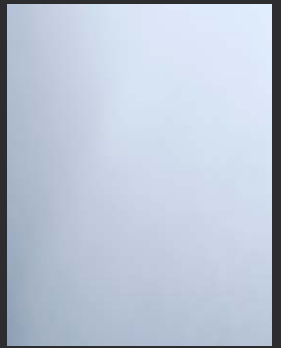
Y-8001-ME  
Copper Brush



Z-8003-ME  
Silver Sparkle



Q-8005-MR  
Gold Mirror



Q-8004-MR  
Silver Mirror



X-0105-DM  
Kuremu Visgrat



This swatch is available  
in Chevron pattern.



X-0106-DM  
Gure Visgrat



This swatch is available  
in Chevron pattern.





- P 30-42 WOODGRAIN
- P 43 WOODGRAIN GLOSS
- P 44-45 WOODGRAIN TEXTURED

# WOODGRAIN

# WOODGRAIN



TH 355 H  
White Vir



TH 909 J  
Oakland Cascade



TH 853 J  
Innocent Oak



TH 381 H  
Winter Bamboo



TH 927 J  
Cloud Sawcut



TH 1212 FC  
Coimbra



TH 153 AA  
White Finelines



TH 186 AA  
Weathered Powder



TH 121 AA  
Clear Larch



TH 134 AA  
Dawn Concord



TH 903 J  
Munich Ash



TH 1211 FC  
Pure Teak



TH 918 J  
Malmo Cream



TH 851 J  
Snowy Afromosia

# WOODGRAIN

E Edging Available H Horizontal Woodgrain W Wood Knots



TH 382 H  
Grey Recomposed Wood



TH 220 AA  
Ashed Bamboo



TH 187 AA  
Weathered Cinnamon



TH 991 J  
Brunneis Tulipwood



TH 178 AA  
Kunst Teak



TH 869 J  
Bleached Legno



TH 371 H  
Smoke Picollo



TH 881 J  
Fernor Walnut



TH 862 J  
Ashley Juglans



TH 120 AA  
Classic Elm



TH 839 J  
Oregon Ash



TH 902 J  
Smoke Legrande

# WOODGRAIN



TH 100 AA  
Winter Maple



TH 167 AA  
Claro Pine



TH 276 B  
Bright Maple



TH 910 J  
Nevada Cascade



TH 261 B  
White Oak



TH 1038 B  
New Natural Maple



TH 1202 FC  
Auckland Oak



TH 111 AA  
White Cherry



TH 327 H  
Impresa Grande



TH 849 J  
Ash Afromosia



TH 1215 FC  
Geneva Elm



# WOODGRAIN

E Edging Available H Horizontal Woodgrain W Wood Knots



TH 352 H  
Cambridge Oak



TH 101 AA  
Ice Pear



TH 157 AA  
Ivory Finelines



TH 270 B  
Pearl Starwood



TH 363 H  
Light Mono Deluxe



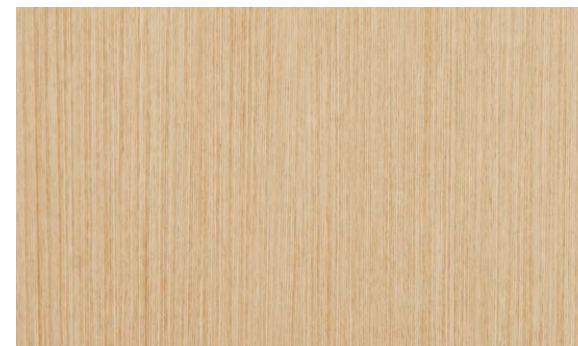
TH 102 AA  
Elite Pear



TH 1224 FC  
Designer Maple



TH 103 AA  
Natural Beech



TH 154 AA  
Cream Finelines



TH 801 J  
Royal Oak



TH 817 J  
Ivory White Ash



# WOODGRAIN



**TH 1225 FC**  
Barcelona Sawcut



**TH 122 AA**  
Express Larch



**TH 889 FC**  
French Tan Oak



**TH 131 AA**  
Tresco Wood



**TH 373 H**  
Sandy Rhumba



**TH 852 J**  
Chocolate Afromosia



**TH 308 H**  
Fine Bamboo



**TH 1222 FC**  
Dakota Oak



**TH 321 H**  
True Rhumba



**TH 878 J**  
Henna Teak



**TH 868 J**  
Classic Legno



**TH 135 AA**  
Sunset Concord



# WOODGRAIN

**E** Edging Available **H** Horizontal Woodgrain Wood Knots



**TH 1203 FC**  
New Zealand Oak



**TH 845 J**  
Creme Deluxe



**TH 850 J**  
Cocoa Afromosia



**TH 1218 FC**  
Brown Deluxe



**TH 109 AA**  
Spice Cherry



**TH 129 AA**  
Powdered Teak



**TH 119 AA**  
Slim Echo



**TH 1205 FC**  
Scandinavia Walnut



**TH 359 H**  
Australian Oak



**TH 362 H**  
Mono Deluxe



**TH 150 AA**  
Piccolo Oak



**TH 920 J**  
Beige Walnut Block



# WOODGRAIN



TH 368 H  
Latte Recomposed Wood



TH 123 AA  
Troy Oak



TH 863 J  
Preston Juglans



TH 360 H  
Elegant Teak



TH 807 J  
Havana Teak



TH 861 J  
Bradford Juglans



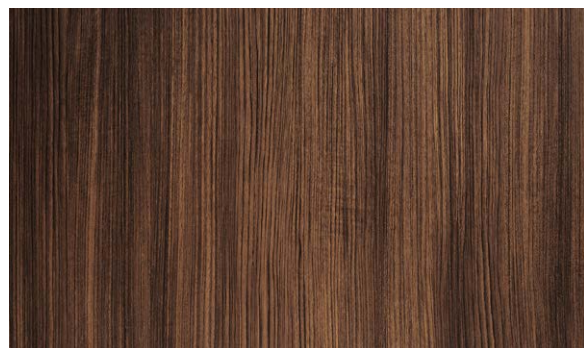
TH 1206 FC  
Bavarian Walnut



TH 271 B  
Golden Starwood



TH 152 AA  
Quateline Mocha



TH 900 J  
Nepal Teak



TH 356 H  
Baltimore Teak



TH 217 AA  
Brilliant Teak



# WOODGRAIN

E Edging Available H Horizontal Woodgrain W Wood Knots



TH 130 AA  
Rich Teak



TH 1207 FC  
Madagascar Walnut



TH 884 J  
Tulare Walnut



TH 375 H  
Brown Sapelli



TH 802 J  
Oxford Rose Wood



TH 215 AA  
Noble Cherry



TH 372 H  
New Rhumba



TH 107 AA  
Sofia Pear



TH 265 B  
New Canadian  
Maple



TH 108 AA  
Extreme Beech



TH 202 B  
Golden Cherry



TH 301 H  
Stripe Beech



# WOODGRAIN



TH 1200 FC  
Fine Cherry



TH 151 B  
New Cherry Wood



TH 890 FC  
Amondo Cherry



TH 366 H  
Red Larch



TH 266 B  
Red Cherry



TH 118 AA  
Auburn Oak



TH 901 J  
Fancy Teak



TH 846 J  
Crimson Maple



TH 275 B  
Red Sapelli



TH 805 J  
Red Chestnut



TH 1230 FC  
Zenith Elgrande



TH 357 H  
California Walnut



# WOODGRAIN

E Edging Available H Horizontal Woodgrain W Wood Knots



TH 1216 FC  
Zurich Elm



TH 821 J  
Mono Walnut



TH 361 H  
Sol Cherry



TH 824 J  
Olive Afromosia



TH 825 J  
Cherry Afromosia



TH 908 J  
Texas Cascade



TH 155 AA  
Brown Finelines



TH 1217 FC  
Basel Elm



TH 1034 B  
New English Oak



TH 325 H  
Brown Kraftwood



TH 818 J  
Classical Ash



TH 369 H  
Brown Recomposed  
Wood



# WOODGRAIN



TH 158 AA  
Dark Picollo Oak



TH 156 AA  
Dark Finelines



TH 1208 FC  
Brown Cascade



TH 298 B  
New Mezza Wood



TH 328 H  
Premium Oak



TH 212 AA  
New Grain Walnut



TH 374 H  
Mocha Oak



TH 105 AA  
Congo Wood



TH 300 H  
Oriental Zebra



# WOODGRAIN

E Edging Available H Horizontal Woodgrain W Wood Knots



TH 1201 FC  
Brown Walnut



TH 106 AA  
Dark Moka



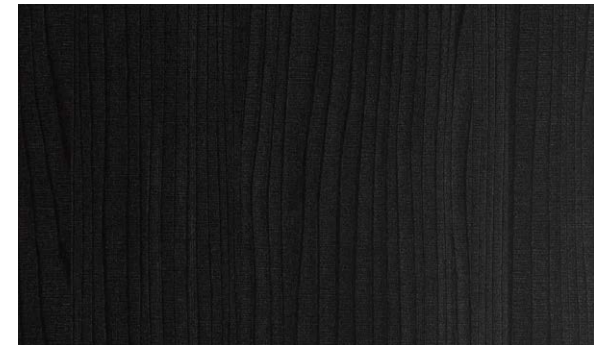
TH 262 B  
Asian Oak



TH 370 H  
Black Recomposed Wood



TH 688 B  
New Zen Wenge



TH 133 AA  
Midnight Concord



TH 205 B  
Asian Beech



TH 305 H  
Prima Oak



TH 180 AA  
Pescara Teak



# WOODGRAIN



**TH 317 H**  
Dark Kraftwood



**TH 993 J**  
Summer Land Oak



**TH 806 J**  
Ash Zebrano



**TH 905 J**  
Cherry Deluxe



**TH 188 AA**  
Weathered Shadow



**TH 252 B**  
Elm Wood



**TH 1231 FC**  
Sandy Sakura



**TH 1232 FC**  
Chocolate Sakura



**TH 1233 FC**  
Vintage Sakura



# WOODGRAIN Gloss

**E** Edging Available **H** Horizontal Woodgrain **W** Wood Knots



**TH 178 GL**  
Kunst Teak Gloss



**TH 134 GL**  
Dawn Concord Gloss



**TH 845 JG**  
Creme Deluxe Gloss



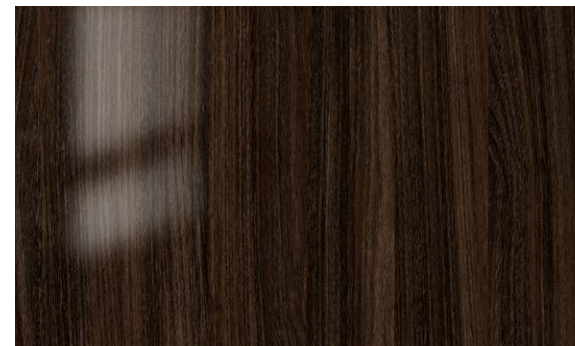
**TH 171 GL**  
Deco Brick Gloss



**TH 846 JG**  
Crimson Maple Gloss



**TH 1230 GL**  
Zenith Elgrande Gloss



**TH 172 GL**  
Deco Dark Brown Gloss



**TH 865 JG**  
Dark Pesaro Gloss



**TH 133 GL**  
Midnight Concord Gloss





# WOODGRAIN Textured



**TH 02 KY**  
White Woodgrain



**TH 853 TM**  
Innocent Oak  
Timber



**TH 851 TM**  
Snowy Afromosia  
Timber



**TH 849 TM**  
Ash Afromosia Timber



**TH 19 RE**  
Greek Oak RE



**TH 862 TM**  
Ashley Juglans  
Timber



**TH 869 LU**  
Bleached Legno Logs



**TH 863 TM**  
Preston Juglans  
Timber



**TH 17 RE**  
Gold Oak RE



**TH 1222 SL**  
Dakota Oak Slate



**TH 882 RE**  
Hansen Walnut RE



**TH 868 LU**  
Classic Legno Logs



# WOODGRAIN Textured

**E** Edging Available **H** Horizontal Woodgrain Wood Knots



**TH 850 TM**  
Cocoa Afromosia Timber



**TH 852 TM**  
Chocolate Afromosia Timber



**TH 15 RE**  
Donar Oak RE



**TH 872 RE**  
Hazel Chemari RE



**TH 861 TM**  
Bradford Juglans Timber



**TH 884 RE**  
Tulare Walnut RE



**TH 876 RE**  
Sibrunt Vrepilla RE



**TH 879 RE**  
Russet Teak RE



**TH 18 RE**  
Basque Oak RE



**TH 20 RE**  
Charter Oak RE



**TH 03 KM**  
New Black  
Woodgrain





- P 48-49 PATTERN
- P 50 PATTERN GLOSS
- P 51 PATTERN TEXTURED

# PATTERN

# PATTERN



**TH 907 J**  
White Charm



**TH 906 J**  
Pure Charm



**TH 602 AL**  
Aluminium Brush



**TH 200 AA**  
Silver Charm



**TH 611 AL**  
Steel Foil

# PATTERN

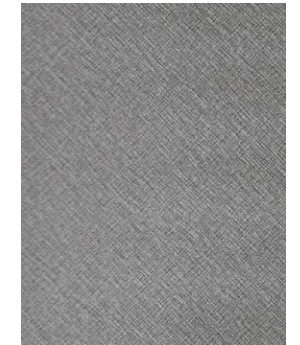
**E** Edging Available **H** Horizontal Woodgrain **W** Wood Knots



**TH 189 DP**  
Jiar Glow



**TH 190 DP**  
Ximena Glow



**TH 191 DP**  
Boone Glow



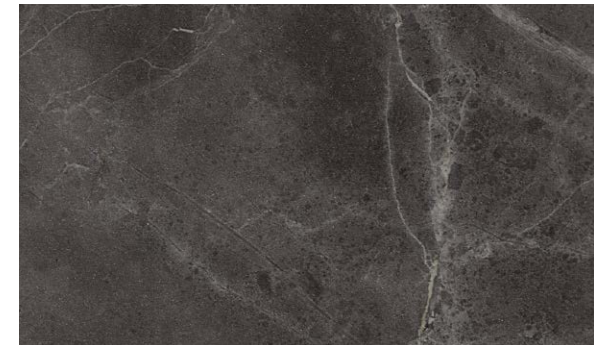
**TH 1221 FC**  
Concrete



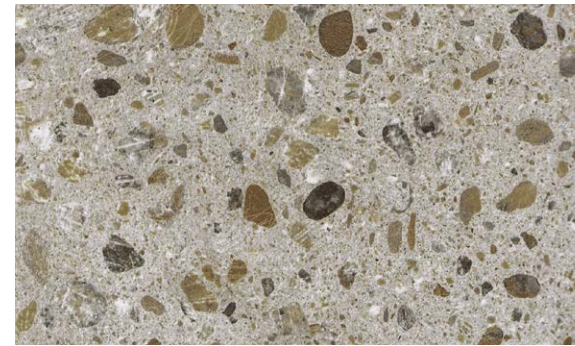
**TH 992 J**  
Latitude Marmo



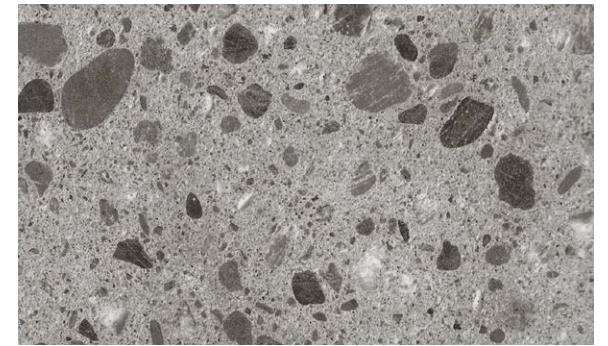
**TH 193 DP**  
Griseo Calacatta



**TH 192 DP**  
Tadao Calacatta



**TH 989 J**  
Bologna Terraz



**TH 990 J**  
Moondust Terraz

# PATTERN Gloss



**TH 887 JG**  
Milky Ramone Gloss



**TH 888 JG**  
Ash Ramone Gloss



**TH 923 JG**  
Creme Fresco Gloss



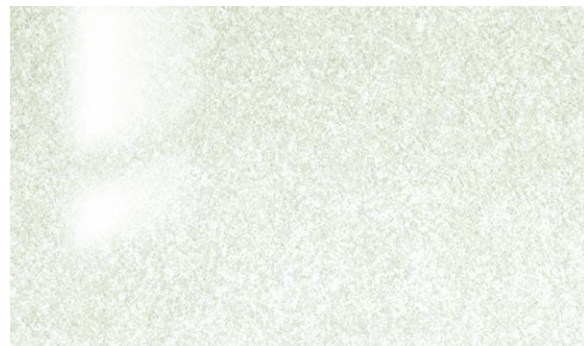
**TH 922 JG**  
Gris Fresco Gloss



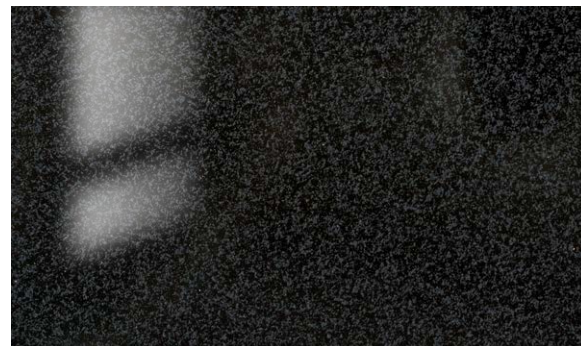
**TH 840 JG**  
Illusions Gloss



**TH 925 JG**  
Sable Claire Gloss



**TH 208 GL**  
White Casablanca Gloss



**TH 204 GL**  
Casablanca Gloss



# PATTERN Textured

**E** Edging Available **H** Horizontal Woodgrain **W** Wood Knots



**TH 1242 SL**  
Sirena Slate



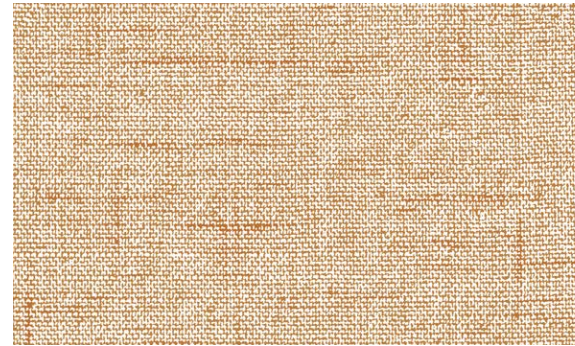
**TH 1221 SL**  
Concrete Slate



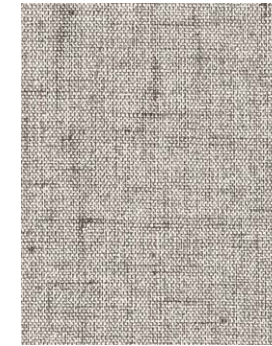
**TH 1244 SL**  
Smoke Canty



**TH 888 SL**  
Ash Ramone Slate



**TH 1250 FA**  
Natural Ordin



**TH 1251 FA**  
Zinc Ordin



**TH 1252 FA**  
Astral Ordin



**TH 1235 FA**  
Cream Brixter



**TH 1236 FA**  
Smoke Brixter



**TH 1237 FA**  
Ashed Brixter



**TH 1239 FA**  
Avena Linen



**TH 1238 FA**  
Ignia Linen



**TH 1240 FA**  
Cova Linen





P 54 SOLID

P 55 SOLID GLOSS & MATTE





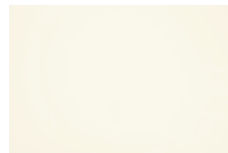

# SOLID

# SOLID

				
TH 002 AA Premier White	<b>E</b> TH 040 AA Chalk	TH 037 AA Ceral	TH 019 AA Egg White	<b>E</b> TH 009 AA Mocassin Ivory
				
TH 034 AA Pearl	TH 036 AA Light Beige	TH 029 AA Sand	TH 010 AA Light Khaki	TH 030 AA Desert Beige
				
TH 050 AA Fox Grey	TH 014 AA Light Grey	<b>E</b> TH 022 AA Smoke Grey	<b>E</b> TH 006 AA Midnight Grey	<b>E</b> TH 003 AA Black
				
TH 013 AA Ash Grey	<b>E</b> TH 048 AA Graphite	TH 035 AA Citrus	TH 021 AA Canary Yellow	TH 005 AA Sunshine Yellow
				
TH 045 AA Classic Orange	TH 012 AA Golden Orange	<b>E</b> TH 004 AA Spark Red	<b>E</b> TH 032 AA New Maroon	TH 043 AA Vintage Wine
				
TH 017 AA Almond Pink	TH 018 AA Bright Pink	<b>E</b> TH 042 AA Dusk Purple	TH 027 AA Purple	<b>E</b> TH 041 AA Mauve
				
TH 033 AA New Light Purple	TH 026 AA Baby Blue	<b>E</b> TH 015 AA Amazon Blue	<b>E</b> TH 007 AA Royal Blue	<b>E</b> TH 049 AA Aqua Marine
				
TH 039 AA Light Green	TH 038 AA Lime Green	TH 011 AA Spring Green	<b>E</b> TH 031 AA Marina Green	TH 025 AA Dark Green

# SOLID GLOSS

**E** Edging Available

				
TH 001 AA Porcelain White	<b>E</b> TH 002 G Pearl White Gloss	<b>E</b> TH 040 G Chalk Gloss	TH 037 G Ceral Gloss	TH 019 G Egg White Gloss
				
TH 009 G Mocassin Ivory Gloss	TH 014 G Light Grey Gloss	<b>E</b> TH 022 G Smoke Grey Gloss	TH 006 G Midnight Grey Gloss	TH 048 G Graphite Gloss <b>NEW</b>
				
TH 029 G Sand Gloss	TH 030 G Desert Beige Gloss	TH 005 G Sunshine Yellow Gloss	TH 045 G Classic Orange Gloss	TH 028 G Orange Gloss <b>E</b>
				
TH 004 G Red Gloss	<b>E</b> TH 042 G Dusk Purple Gloss	TH 018 G Bright Pink Gloss	TH 017 G Almond Pink Gloss	TH 026 G Baby Blue Gloss
				
TH 015 G Amazon Blue Gloss	TH 007 G Royal Blue Gloss	<b>E</b> TH 038 G Lime Green Gloss	TH 011 G Spring Green Gloss	<b>E</b> TH 031 G Marina Green Gloss
	<b>MATTE</b>			
TH 003 G Black Gloss <b>E</b>				TH 016 AA White Matte
				
TH 009 D Mocassin Ivory Matte	TH 048 D Graphite Matte <b>NEW</b>	TH 003 D Black Matte	TH 026 D Baby Blue Matte	TH 015 D Amazon Blue Matte
				
TH 038 D Lime Green Matte	TH 017 D Almond Pink Matte	TH 018 D Bright Pink Matte	TH 042 D Dusk Purple Matte	TH 004 D Red Matte

# Maintenance Manual

## PRECAUTION



### HARSH CHEMICALS

Harsh chemicals and acid-based cleaner such as oven cleaner, rust remover or drain cleaner may scratch and discolor the HPL surface. Any spill should be removed immediately, rinsed and wiped dry.



### HOT OBJECT

Exposure to high temperature object or heat-generating appliances may damage and discolor the HPL. Use protective insulation pad between the hot surface and HPL.



### SHARP OBJECT

Avoid using knives or other sharp objects directly on the HPL surface. Always use cutting/chopping boards to protect the laminate surface.



### IMPACT

Excessive impact from dropping heavy objects on the HPL may cause dents, cracks or chipping.

## CLEANING PROCESS



### DAMP CLOTH/SPONGE

To clean the HPL surface, use a damp cloth or sponge with clean water.



### DISH SOAP/MILD DETERGENT

More difficult stains such as coffee or tea can be cleaned using melamine sponge and dish soap or mild detergent.



### BAKING SODA

If stain persists, use a little of baking soda and water and scrub lightly using a soft bristled brush. However, excessive scrubbing may damage the decorative surface, especially those with gloss finish.

# TACO HPL Index

NO	CODE	EDGING	PAGE	NO	CODE	EDGING	PAGE
1	TH 02 KY	✓	44	37	TH 016 AA		55
2	TH 03 KM		45	38	TH 017 AA		54
3	TH 15 RE		45	39	TH 017 D		55
4	TH 17 RE		44	40	TH 017 G		55
5	TH 18 RE		45	41	TH 018 AA	✓	54
6	TH 19 RE		44	42	TH 018 D		55
7	TH 20 RE		45	43	TH 018 G		55
8	TH 001 AA	✓	55	44	TH 019 AA	✓	54
9	TH 002 AA	✓	54	45	TH 019 G		55
10	TH 002 G	✓	55	46	TH 021 AA		54
11	TH 003 AA	✓	54	47	TH 022 AA	✓	54
12	TH 003 D		55	48	TH 022 D		55
13	TH 003 G	✓	55	49	TH 022 G		55
14	TH 004 AA	✓	54	50	TH 025 AA		54
15	TH 004 D		55	51	TH 026 AA	✓	54
16	TH 004 G	✓	55	52	TH 026 D		55
17	TH 005 AA	✓	54	53	TH 026 G		55
18	TH 005 G		55	54	TH 027 AA	✓	54
19	TH 006 AA	✓	54	55	TH 028 G	✓	55
20	TH 006 G		55	56	TH 029 AA		54
21	TH 007 AA	✓	54	57	TH 029 G		55
22	TH 007 G	✓	55	58	TH 030 AA		54
23	TH 009 AA	✓	54	59	TH 030 G		55
24	TH 009 D		55	60	TH 031 AA		54
25	TH 009 G		55	61	TH 031 G		55
26	TH 010 AA		54	62	TH 032 AA		54
27	TH 011 AA	✓	54	63	TH 033 AA		54
28	TH 011 G	✓	55	64	TH 034 AA		54
29	TH 012 AA	✓	54	65	TH 035 AA		54
30	TH 013 AA	✓	54	66	TH 036 AA		54
31	TH 014 AA	✓	54	67	TH 037 AA		54
32	TH 014 D		55	68	TH 037 G		55
33	TH 014 G	✓	55	69	TH 038 AA		54
34	TH 015 AA	✓	54	70	TH 038 D		55
35	TH 015 D		55	71	TH 038 G		55
36	TH 015 G		55	72	TH 039 AA		54

## TACO HPL INDEX

NO	CODE	EDGING	PAGE
73	TH 040 AA		54
74	TH 040 G		55
75	TH 041 AA		54
76	TH 042 AA		54
77	TH 042 D		55
78	TH 042 G		55
79	TH 043 AA		54
80	TH 045 AA		54
81	TH 045 G		55
82	TH 048 AA		54
83	TH 048 D	NEW	55
84	TH 048 G	NEW	55
85	TH 049 AA		54
86	TH 050 AA		54
87	TH 100 AA	✓	32
88	TH 101 AA	✓	33
89	TH 102 AA	✓	33
90	TH 103 AA	✓	33
91	TH 105 AA	✓	40
92	TH 106 AA	✓	41
93	TH 107 AA	✓	37
94	TH 108 AA	✓	37
95	TH 109 AA		35
96	TH 111 AA	✓	32
97	TH 118 AA	✓	38
98	TH 119 AA	✓	35
99	TH 120 AA	✓	31
100	TH 121 AA	✓	30
101	TH 122 AA	✓	34
102	TH 123 AA		36
103	TH 129 AA	✓	35
104	TH 130 AA	✓	37
105	TH 131 AA		34
106	TH 133 AA	✓	41
107	TH 133 GL		43
108	TH 134 AA	✓	30
109	TH 134 GL		43
110	TH 135 AA	✓	34
111	TH 150 AA	✓	35
112	TH 151 B	✓	38
113	TH 152 AA	✓	36
114	TH 153 AA	✓	30
115	TH 154 AA	✓	33
116	TH 155 AA	✓	39
117	TH 156 AA	✓	40
118	TH 157 AA	✓	33
119	TH 158 AA	✓	40
120	TH 167 AA		32
121	TH 171 GL		43
122	TH 172 GL		43
123	TH 178 AA		31
124	TH 178 GL		43
125	TH 180 AA		41
126	TH 186 AA		30
127	TH 187 AA		31
128	TH 188 AA		42
129	TH 189 DP		49
130	TH 190 DP		49
131	TH 191 DP		49
132	TH 192 DP		49
133	TH 193 DP		49
134	TH 200 AA	✓	48
135	TH 202 B	✓	37
136	TH 204 GL		50
137	TH 205 B	✓	41
138	TH 208 GL		50
139	TH 212 AA	✓	40
140	TH 215 AA	✓	37
141	TH 217 AA	✓	36
142	TH 220 AA	✓	31
143	TH 252 B	✓	42
144	TH 261 B	✓	32
145	TH 262 B	✓	41
146	TH 265 B	✓	37

## TACO HPL INDEX

NO	CODE	EDGING	PAGE
147	TH 266 B	✓	38
148	TH 270 B	✓	33
149	TH 271 B	✓	36
150	TH 275 B	✓	38
151	TH 276 B		32
152	TH 298 B	✓	40
153	TH 300 H	✓	40
154	TH 301 H	✓	37
155	TH 305 H	✓	41
156	TH 308 H	✓	34
157	TH 317 H	✓	42
158	TH 321 H	✓	34
159	TH 325 H	✓	39
160	TH 327 H	✓	32
161	TH 328 H	✓	40
162	TH 352 H	✓	33
163	TH 355 H	✓	30
164	TH 356 H	✓	36
165	TH 357 H	✓	38
166	TH 359 H	✓	35
167	TH 360 H	✓	36
168	TH 361 H	✓	39
169	TH 362 H	✓	35
170	TH 363 H	✓	33
171	TH 366 H	✓	38
172	TH 368 H	✓	36
173	TH 369 H		39
174	TH 370 H	✓	41
175	TH 371 H	✓	31
176	TH 372 H	✓	37
177	TH 373 H	✓	34
178	TH 374 H	✓	40
179	TH 375 H		37
180	TH 381 H		30
181	TH 382 H		31
182	TH 602 AL		48
183	TH 611 AL		48
184	TH 688 B	✓	41
185	TH 701 CR	✓	15
186	TH 701 CRG	✓	15
187	TH 702 CR	✓	15
188	TH 702 CRG	✓	15
189	TH 703 CR	✓	15
190	TH 703 CRG	✓	15
191	TH 801 J	✓	33
192	TH 802 J	✓	37
193	TH 805 J	✓	38
194	TH 806 J	✓	42
195	TH 807 J	✓	36
196	TH 817 J	✓	33
197	TH 818 J		39
198	TH 821 J	✓	39
199	TH 824 J		39
200	TH 825 J	✓	39
201	TH 839 J		31
202	TH 840 JG		50
203	TH 845 J	✓	35
204	TH 845 JG		43
205	TH 846 J	✓	38
206	TH 846 JG	✓	43
207	TH 849 J		32
208	TH 849 TM		44
209	TH 850 J		35
210	TH 850 TM		45
211	TH 851 J		30
212	TH 851 TM		44
213	TH 852 J		34
214	TH 852 TM		45
215	TH 853 J		30
216	TH 853 TM		44
217	TH 861 J		36
218	TH 861 TM		45
219	TH 862 J		31
220	TH 862 TM		44



## TACO HPL INDEX

NO	CODE	EDGING	PAGE	NO	CODE	EDGING	PAGE
221	TH 863 J		36	258	TH 990 J		49
222	TH 863 TM		44	259	TH 991 J		31
223	TH 865 JG		43	260	TH 992 J		49
224	TH 868 J		34	261	TH 993 J		42
225	TH 868 LU		44	262	TH 1034 B	✓	39
226	TH 869 J		31	263	TH 1038 B	✓	32
227	TH 869 LU		44	264	TH 1200 FC	✓	38
228	TH 872 RE		45	265	TH 1201 FC	✓	41
229	TH 876 RE		45	266	TH 1202 FC	✓	32
230	TH 878 J		34	267	TH 1203 FC	✓	35
231	TH 879 RE		45	268	TH 1205 FC	✓	35
232	TH 881 J		31	269	TH 1206 FC	✓	36
233	TH 882 RE		44	270	TH 1207 FC	✓	37
234	TH 884 J		37	271	TH 1208 FC	✓	40
235	TH 884 RE		45	272	TH 1211 FC	✓	30
236	TH 887 JG		50	273	TH 1212 FC		30
237	TH 888 JG		50	274	TH 1215 FC	✓	32
238	TH 888 SL		51	275	TH 1216 FC		39
239	TH 889 FC		34	276	TH 1217 FC		39
240	TH 890 FC		38	277	TH 1218 FC	✓	35
241	TH 900 J	✓	36	278	TH 1221 FC		49
242	TH 901 J		38	279	TH 1221 SL		51
243	TH 902 J	✓	31	280	TH 1222 FC		34
244	TH 903 J	✓	30	281	TH 1222 SL		44
245	TH 905 J	✓	42	282	TH 1224 FC		33
246	TH 906 J	✓	48	283	TH 1225 FC		34
247	TH 907 J	✓	48	284	TH 1230 FC		38
248	TH 908 J	✓	39	285	TH 1230 GL		43
249	TH 909 J	✓	30	286	TH 1231 FC		42
250	TH 910 J	✓	32	287	TH 1232 FC		42
251	TH 918 J	✓	30	288	TH 1233 FC		42
252	TH 920 J		35	289	TH 1235 FA		51
253	TH 922 JG		50	290	TH 1236 FA		51
254	TH 923 JG		50	291	TH 1237 FA		51
255	TH 925 JG		50	292	TH 1238 FA		51
256	TH 927 J	✓	30	293	TH 1239 FA		51
257	TH 989 J		49	294	TH 1240 FA		51

## TACO HPL INDEX

NO	CODE	EDGING	PAGE	NO	CODE	EDGING	PAGE
295	TH 1242 SL		51	332	X-0062-DM	✓	26
296	TH 1244 SL		51	333	X-0063-DM	✓	26
297	TH 1250 FA		51	334	X-0064-G		26
298	TH 1251 FA		51	335	X-0069-ST		26
299	TH 1252 FA		51	336	X-0070-ST		26
300	TH 5001 NT <b>NEW</b>	✓	19	337	X-0072-DM		27
301	TH 5002 NT <b>NEW</b>	✓	19	338	X-0081-DM		23
302	TH 5003 NT <b>NEW</b>		18	339	X-0082-DM		24
303	TH 5004 NT <b>NEW</b>		19	340	X-0083-G	✓	25
304	TH 5005 NT <b>NEW</b>	✓	19	341	X-0089-TR		22
305	TH 5006 NT <b>NEW</b>	✓	18	342	X-0090-TR		24
306	TH 5007 NT <b>NEW</b>		19	343	X-0091-DM		24
307	TH 5008 NT <b>NEW</b>	✓	18	344	X-0092-DM		24
308	TH 5009 NT <b>NEW</b>	✓	19	345	X-0095-DM		22
309	TH 5010 NT <b>NEW</b>		19	346	X-0096-DM		24
310	TH 5011 NT <b>NEW</b>		19	347	X-0098-DM	✓	22
311	TH 5012 NT <b>NEW</b>		18	348	X-0099-DM		24
312	X-0008-G	✓	25	349	X-0100-DM		24
313	X-0009-G	✓	25	350	X-0105-DM		27
314	X-0011-G	✓	25	351	X-0106-DM		27
315	X-0012-G		25	352	X-0108-DM	✓	22
316	X-0014-G		25	353	X-0109-DM		23
317	X-0018-SU	✓	27	354	X-0110-DM		24
318	X-0019-SU	✓	27	355	X-0111-DM		24
319	X-0020-G		26	356	X-0120-DM		22
320	X-0020-SU		26	357	Y-8001-ME		27
321	X-0044-CM		23	358	Z-8003-ME		27
322	X-0045-CM	✓	24	359	Q-8004-MR		27
323	X-0046-CM	✓	22	360	Q-8005-MR		27
324	X-0047-CM		23	361	Q-9000-AF		14
325	X-0048-CM		23	362	Q-9001-AF		14
326	X-0049-CM		22	363	Q-9002-AF		14
327	X-0050-CM		23	364	Q-9003-AF		14
328	X-0051-CM		23				
329	X-0052-CM		22				
330	X-0056-CM		23				
331	X-0060-DM		26				

PVC EDGING

TACO



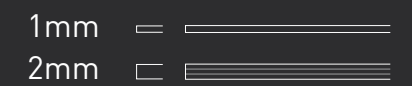


**TACO PVC Edging** gives smooth and seamless finishes to furniture edges. Highly resistant to impact, scratches and wear and tear, it protects furniture edges, and makes them more durable and aesthetically pleasing.

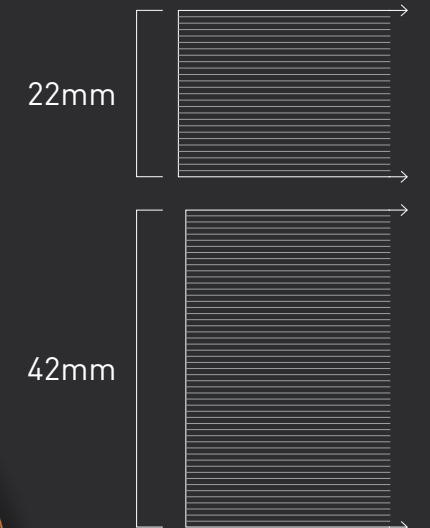
**TACO PVC Edging** is available in more than 100 color and pattern options to complement our laminates.

DIMENSIONS

THICKNESS



WIDTH



For more information, please contact [Halo TACO](#) ☎ 021-3971-8600 📞 0811-905-6868



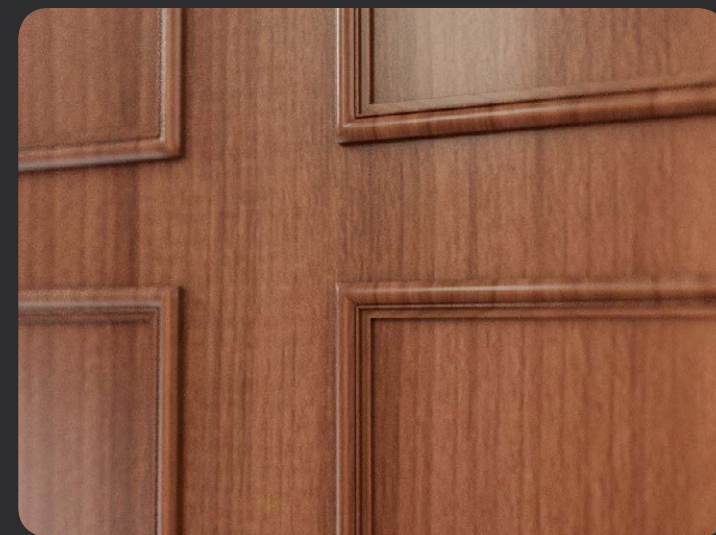
**TACO**

**PVC SHEET**



**TACO PVC Sheet** is a decorative laminate that can be used to enhance the look of furniture cabinets, wall panels and doors. Its flexible feature makes it suitable to be applied on curved or profiled surfaces. Our PVC Sheet comes in a roll format of up to 100 meter length, allowing it to be applied on long panels seamlessly. It is also available in wide range of designs and colors.

DIMENSIONS	THICKNESS	0.2mm (Selected Items) 0.3mm
	WIDTH	1.25m



For more information, please contact [Halo TACO](#) ☎ 021-3971-8600 📞 0811-905-6868



**TACO**

MAKE THAT CHANGE